

Families have multiple barriers to overcome to end the cycle of violence in their homes.

“The cycle stops now, with me.”

# WAKE FAMILY VIOLENCE PREVENTION

**Collaborative Focus :**  
Stable Homes

**Geographic Focus :**  
Wake County

**Big Idea :**  
To ensure victims of domestic violence have the support they need to become and remain independent and violence-free.

Children who've experienced domestic violence often meet the diagnostic criteria for Post Traumatic Stress Disorder (PTSD)

updated 9/2017

## COMMUNITY IMPACT PARTNERS:

**ALLIANCE OF DISABILITY ADVOCATES**  
*Programming for youth and adults with disabilities including: Information and referral services that allow individuals affected by DV with a disability to integrate safely back into the community.*

**HAVEN HOUSE**  
*Services provide effective, evidenced-based programs and services to youth and families who are homeless, in crisis or having difficulties at home school or in the community*

**INTERACT**  
*InterAct is a private nonprofit organization that provides safety, support, and awareness to victims and survivors of domestic violence and rape/sexual assault in Wake County. InterAct also promotes violence-free relationships and communities through collaboration, public information, education, and advocacy.*

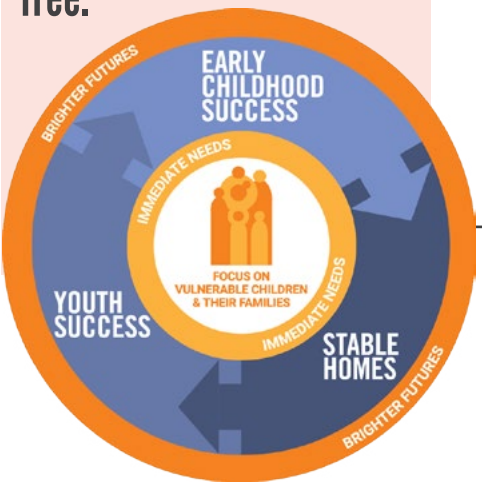
**KIRAN, INC.**  
*Full range of culturally-sensitive services and advocacy for South Asian women and men facing abuse in their lives. Services include: intensive case management, language-specific information and support*

**LEGAL AID OF NC, INC.**  
*Provides free legal help to low-income North Carolinians in civil cases involving basic human needs like safety, shelter, income and more*

**SAFECHILD**  
*Preventing and eliminating child abuse in Wake County*

## PATHWAYS TO PROGRESS: THE TWO-GENERATIONAL MODEL

- Connects families fleeing from violent homes with comprehensive wrap-around services that include access to attorneys through Legal Aid, culturally appropriate and specific services, short and long-term case management, parenting classes, and services for those with disabilities.
- Targets families who are at highest risk of serious injury or death
- Connects families with all resources within the collaborative
- Breaks the cycle of violence across multiple generations.
- Offers families immediate safety and long term support



United Way of the Greater Triangle supports 17 Collaborative Partners focusing on Youth Success (Y), Early Childhood Success (E), and Stable Homes (S).

Together we are #getting2YES.

